

TODAY'S RADIO BROADCASTS

CHICAGO WAVE LENGTHS.

W-G-N—720 WENR—870 KYW—1020
WMAQ—560 WLS—870 WBBM—1080
WMAQ—670 WAAF—920 WJJD—1130
WBBM—770 WCFB—970 WGES—1360

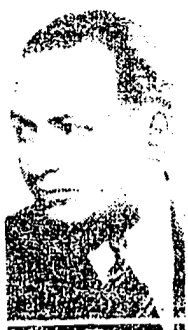
[Central Daylight Saving Time.]

A.M.
7:00—W-G-N—"Good Morning," a musical program; time signals, weather reports.
WAAF—Farm Falls hour.
WCFB—Time express.
WBBM—The Star program.
WMAQ—Morning Wineson.
KYW—The Musical Club.
WLS—Smile-a-While.
7:15—WJJD—Bob Pickart.
7:30—WLS—Morning devotions.
WAAF—Breakfast express.
8:00—WMAQ—Breakfast club.
WCFB—Bad Stones.
WJJD—Art Linnick.
8:30—WLS—Foggy and Steve.
8:45—W-G-N—"The 'Keep Fit club,' with Capt. Paul Fugarty.
WIND—Meistersingers.
9:00—W-G-N—Morning musical.
WMAQ—Edward McHugh, songs.
KYW—Annelle McCullough, songs.
WBBM—Ensemble.
WLS—Harmony Ranch.
9:15—W-G-N—Eubert Hall, readings.
WCFB—Highlights of music.
WMAQ—Singing Strangs.
WLS—Junior stars.
WBBM—Quartet.
WAAF—Merry-go-round.
9:30—W-G-N—Harold Turner, pianist; weather forecast; market report.
KYW—Morning Parade.
WBBM—Children's program.
WMAQ—Time tune.
WLS—Children's program.
9:45—W-G-N—Arthur Wright and Len Salvo.
WMAQ—Originalities.
WLS—Marching Cream.
10:00—W-G-N—Music personalities, with Francis X. Bushman and Elizabeth Hines.
WMAQ—Galaxy of stars.
WBBM—Kaiser's orchestra.
WAAF—Reveries.
KYW—Hourymasters.
WIND—The Captivators.
10:15—W-G-N—Your Friendly Neighbor.
WBBM—Jim and Bob.
WMAQ—Summer Jollys.
10:30—W-G-N—Bob Davis and the Texans.
WBBM—Concert Miniatures.
WCFB—Mrs. Ruth Wakefield.
WMAQ—Bernie's Grenadiers.
WBBM—KVC club.
KYW—Buddy Budds.
10:45—W-G-N—Painted Dreams.
WENR—"Down Laver's Lane."
WBBM—Tom Baker, songs.
WIND—Concert Miniatures.
WCFB—Variety program.
11:00—W-G-N—Hal Kemp's orchestra.
WBBM—Symphonists.
WBBM—Church school.
WMAQ—High and Low.
WENR—Archie quartet.
KYW—Pianist.
11:15—W-G-N—"Rubie" Appleberry.
WENR—Two blues.
WCFB—Variety program.
WBBM—Virginia Clark; Gene, Charles.
WMAQ—Parent-Teacher talk.
KYW—Gemma Fontarova, soprano.
WIND—Gennie Gates.
11:30—W-G-N—Market report; Len Salvo, organist.
WAAF—Estelle Hanes, pianist.
WBBM—Evelyn's orchestra.
WMAQ—Joe and Sade.
KYW—Merry Madcap.
WENR—Harmony Four.
WIND—Gene Ryan, Tex-town text w.
11:45—W-G-N—Gene Baker, Home Management.
WMAQ—Sizzlers.
WLS—On Parade.
NOON—W-G-N—Midday Service, Dr. John L. Dickson, director.
KYW—Ted Black's orchestra.
WBBM—Orzani.
WCFB—Lunchtime concert.
WMAQ—Words and music.
WJJD—Velas ensemble.
WJJD—Widley and Sheehan.
WAAF—Noontime concert.

P. M.
12:15—WBBM—Ensemble.
WIND—Madison ensemble.
12:30—W-G-N—Grain markets; Palmer House ensemble.
WBBM—Organist.
KYW—National Farm and Home hour.
WLS—Round-up.
WMAQ—International from England, Louis Falso WIND.
WJJD—Fred Beck, organist.
12:45—W-G-N—Jesse Crawford, organist.
WBBM—Jerry Sullivan, songs.
1:00—W-G-N—Charlie Club speaker, T. E. Schroeder.
WMAQ—Duke Fidler's orchestra.
WCFB—Woolly's Fair parade.
WAAF—Housie Philosopher.
1:10—W-G-N—Lewis White, basso.
1:15—WBBM—Russell's orchestra.
WCFB—A Century of Progress orchestra.
WLS—Organist.
WIND—Dentoli's orchestra.
WJJD—Muschelant children.
WAAF—Charles Hall.
1:30—W-G-N—A Century of Progress orchestra.
WBBM—Pinto Pete.
WLS—Farm tunes.
KYW—Spanish choir.
WMAQ—Fables of the Ficus.
WIND—Ann Leaf, organist.
WAAF—A Mood in Blue.
1:45—W-G-N—Palmer House ensemble.
WLS—Phil Evans.
WIND—Round Towners.
2:00—W-G-N—Harold Turner, pianist.
WCFB—Eed Hot and Low Down.
WBBM—"Mother Ruth."
WIND—National Marble Tournament.
WMAQ—Tommy Tucker's orchestra.
WLS—Romance of Meat.
KYW—MacInnis island celebration.
2:15—W-G-N—Century of Progress orchestra.
WLS—Merry-go-round.
WAAF—Bennie Kozak, pianist.
WMAQ—Quartet.
2:30—W-G-N—Joseph Hassner, baritone.
WMAQ—Sally Connell.
WIND—Dancing by the Sea.
2:45—W-G-N—Baseball—Fittsburgh vs. Chicago Cubs (also WBBM and WMAQ).
3:00—WCFB—Moments Musical.
WAAF—Music in the Air.
WBBM—Plain talks.
KYW—G. O. P. anniversary.
WIND—Baseball—White Sox vs. Cleveland.
3:15—WLS—Smiling Through.
3:30—WENR—Chicago Symphony orchestra.
WAAF—With the Marines.
4:00—WBBM—Pinto Pete.
KYW—Musical comedy.
4:15—WAAF—Musical Travobone.
4:30—KYW—Phil Harris' orchestra.
WENR—Two pianos.
4:45—W-G-N—Musical.
KYW—Personalities in Paint.
WENR—Grandpa Burton.
5:00—WAAF—Rhythm Kings.
KYW—Mel Stitzel.
WENR—Al Pearce's gang.
WMAQ—Johnny Johnson's orchestra.
WBBM—Raginsky's ensemble.

W-G-N FEATURES

A 45 minute concert broadcast by the Chicago Symphony orchestra from the Swift shell at the Fair, beginning at 9:15 o'clock will be a feature of W-G-N's schedule tonight. Eric DeLamarter will conduct the orchestra and Pierre Andre will be announcer. Other W-G-N features:



RALPH GINSBURG.

10:15—"The Friendly Neighbor," a program of household hints and homely philosophy for women.
12:30 p. m.—1:45 p. m.—and 6:15 p. m.—The Palmer House ensemble, directed by Ralph Ginsburg.
5:30 p. m.—Tony D'Orazi, the Cartoonist of the Air.
7:30 p. m.—Hal Kemp's Kapers, with the orchestra, Maxine Grey, Skinnay Ennis, Saxy Dowell, and Bob Allen.
9:15 p. m.—The Chicago Symphony orchestra. The program:
Overture to "The Merry Wives of Windsor" Nicoli Adagio Pastorale Godard Military March for suite "Marianne" Saint-Saens Oriental suite "Beni Mora" Holst Waltz from "The Thorn Rose."
10 p. m.—The Doring Sisters, a harmony trio.
10:30 p. m. to 2 a. m.—Three hours and a half of Chicago's finest dance music played by the orchestras of Wayne King, Bernie Cummins, Ted Weems, Charlie Agnew, Earl Burnett, Bob Facelli, Hal Kemp, and Keith Beecher.

On Other Stations.

12:30 p. m.—WMAQ—Resume of Wimbledon Tennis Matches from London.
3:30 p. m.—WENR—Chicago Symphony orchestra.
8 p. m.—WBBM—Crete Stueckgold and Andre Kostranetz' orchestra.
8 p. m.—WMAQ—One Man's Family.
8:30 p. m.—KYW—Goldman band concert.
8:30 p. m.—WBBM—Detroit Symphony orchestra.
9:15 p. m.—WMAQ—Guy Lombardo's orchestra.
9:30 p. m.—WLS—National Barn Dance.
10:30 p. m.—WMAQ—Paul White-man's orchestra.
5:15—W-G-N—Bob Facelli's orchestra.
WBBM—Bobby Hay's orchestra.
WMAQ—Cassio Boys.
KYW—Johnny Johnson's orchestra.
5:30—W-G-N—Tony D'Orazi, cartoonist.
WMAQ—Two pianos.
WCFB—Len Terry, organist.
WENR—Three C's.
WBBM—Jack Armstrong.
WIND—Three Flats.
WJJD—Polish Hour.
5:45—W-G-N—"Little Orphan Annie."
WBBM—Lucky Star Ranch.
WMAQ—Travel Talk.
WCFB—Charities talk.
6:00—W-G-N—Leonard Salvo, organist.
WAAF—Sports review.
KYW—Southernaires.
WBBM—Russell's orchestra.
WMAQ—Capt. Al Williams.
6:15—W-G-N—Palmer House ensemble.
WMAQ—Homespun.
WENR—Baseball resumé.
WBBM—Sports reviewing.
6:30—W-G-N—John Harrington, the sports reviewer.
WBBM—Betty Barthell.
WMAQ—Don Bestor's orchestra.
WENR—John Herrick, baritone.
WCFB—Vienna ensemble.
6:45—W-G-N—Quin Ryan, World's Fair reporter.
WBBM—Ragie Child's orchestra.
WLS—Blue Grass trio.
KYW—Don Bestor's orchestra.
7:00—W-G-N—Hal Kemp's orchestra.
WBBM—Morton Downey's Party.
WLS—"House of Rothschild."
WMAQ—Hessberger's ensemble.
WAAF—Symphonic Hour.
7:15—W-G-N—Lawson "Y" P. Gler club.
WLS—Bobby Eugene's orchestra.
7:30—W-G-N—Hal Kemp's orchestra.
WMAQ—Miniature Theater.
KYW—Hands Across the Border.
7:45—WBBM—Henry Busse's orchestra.
WIND—Fats Waller.
8:00—W-G-N—Frank Sykera, cellist.
KYW—Jandurec.
WBBM—Greta Stueckgold and Andre Kostelanetz' orchestra.
WLS—The Westeners.
WCFB—Herr Lauer, the Hungry Five.
WMAQ—One Man's Family.
8:15—W-G-N—Charlie Agnew's orchestra.
WLS—Barn Dance acts.
8:30—W-G-N—Wayne King's orchestra.
WBBM—Detroit Symphony orchestra.
WMAQ—Chicago Symphony orchestra.
KYW—Goldman Band concert.
8:45—W-G-N—Bernie Cummins' orchestra.
WJJD—Alexander McQueen.
WLS—Neighbors.
9:00—W-G-N—Tommy's Tribune.
WMAQ—Ray Knight's Cuckoos.
WLS—Barn Dance.
WCFB—Mona Van, soprano.
9:05—W-G-N—Humdinks of Other Days.
9:15—W-G-N—Chicago Symphony orchestra.
WMAQ—Guy Lombardo's orchestra.
KYW—Bavarian ensemble.
9:30—WBBM—Harry Susnik's orchestra.
KYW—Frankie Masters' orchestra.
WIND—Elder Michaux.
WJJD—Polish program.
10:00—W-G-N—Doring sisters.
WMAQ—Eddie Duchin's orchestra.
WBBM—Earl Hines' orchestra.
KYW—Leonard Kellar's orchestra.
WIND—Sylvia Feros.
10:15—W-G-N—Earl Burnett's orchestra.
WBBM—Glen Gray's orchestra.
KYW—Clyde Lucas' orchestra.
10:30—W-G-N—Wayne King's orchestra.
KYW—Ernie Holtz' orchestra.
WMAQ—ROA dedicatory program.
WLS—Munich Memories.
10:50—W-G-N—Bernie Cummins' orchestra.
11:00—KYW—Jack Demmy's orchestra.
WLS—Barn dance (continual).
WBBM—Ferde Grofe's orchestra.
WCFB—Paul Ash revue.
11:10—W-G-N—Ted Weems' orchestra.
11:30—W-G-N—Charlie Agnew's orchestra.
KYW—Vincent Lopez's orchestra.
WBBM—Jack Russell's orchestra.
11:45—W-G-N—Earl Burnett's orchestra.
Midnight—W-G-N—Bob Facelli's orchestra.
WMAQ—Leonard Kellar's orchestra.
WENR—Barn Dance (continual).
KYW—Frankie Masters' orchestra.
WBBM—Harry Susnik's orchestra.
12:15—W-G-N—Bernie Cummins' orchestra.
12:30—W-G-N—Hal Kemp's orchestra.
WMAQ—Eddie Duchin's orchestra.
KYW—Clyde Lucas' orchestra.
WBBM—Freddie Hauke's orchestra.
12:45—W-G-N—Keith Beecher's orchestra.
WBBM—Jules Albert's orchestra.
1:00—W-G-N—Hal Kemp's orchestra.
1:15—W-G-N—Earl Burnett's orchestra.
1:30—W-G-N—Hal Kemp's orchestra.
WBBM—Henry Busse's orchestra.
1:45—W-G-N—Charlie Agnew's orchestra.
WBBM—Earl Hines' orchestra.